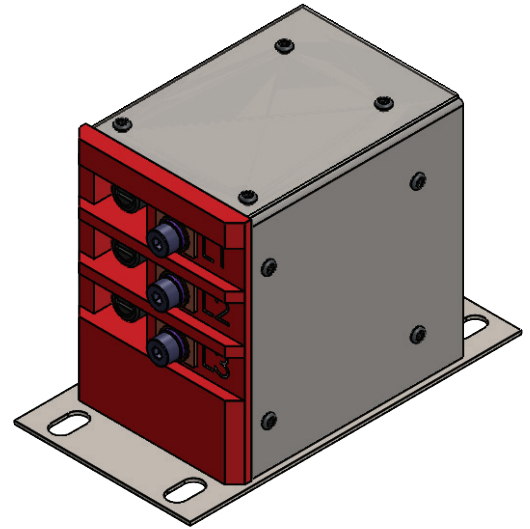


## L12W0201 VFDGuard Surge Protection Device 1140V Input

VFDGuard L12W0201 is specially designed for meeting severe surge environment of VFD input line voltage.

It features a very fast response and ultra low clamping characteristics over traditional MOV solutions. They can be connected in front of VFD to create a very high surge current protection solution.

- Suppress power line surges from power network and protect VFD power switch modules.
- Integrated and designed to protect variable frequency driver from incoming power source surges and transient.
- L12W0201 makes transient short circuit current no longer circulate through the sensitive power semiconductor switches.



### Technical Parameters

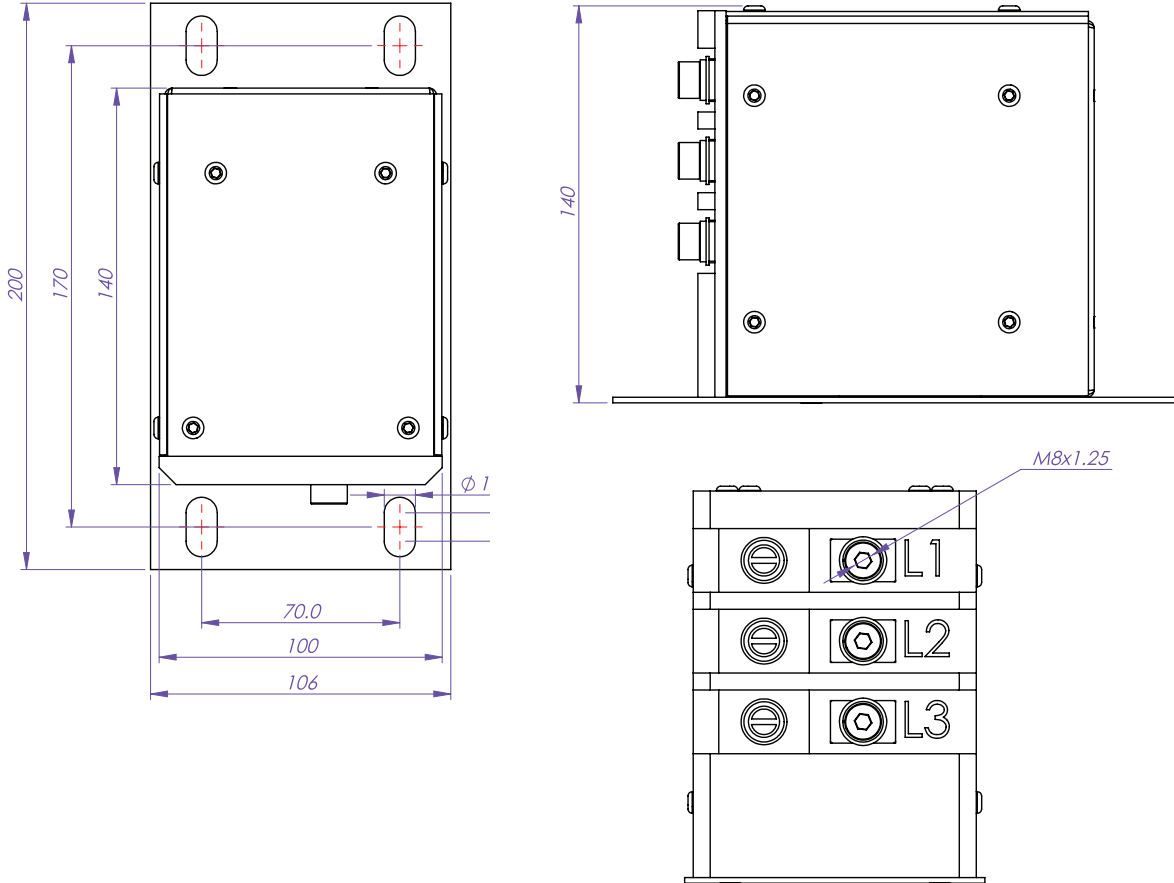
- Insulation Voltage: 3500Vac 1min
- Max Clamping Line to Line Voltage: Less than 2800VDC
- Clamping Line to Line Voltage at 1mA: 2200VDC-2400VDC
- Insulation Resistance to Ground: 1000Vdc >100MΩ
- Normal Voltage: 1140VAC +/-10%
- Leakage Current <10μA

### Typical Application

- Continuous miners
- Continuous Haulage
- Long Wall Shearers
- Mobile bolters
- Mobile Roof Supports
- Remote Control Scoops
- Remote Control Loaders
- Shuttle Cars
- Feeder Breaker

## L12W0201 VFDGuard Surge Protection Device 1140V Input

### Dimensions



### Circuit

